

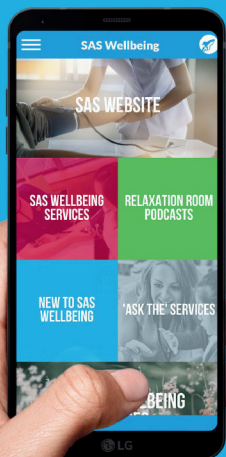
TRUST MATTERS



EMPOWERING COMMUNITIES TO POSITIVELY IMPACT THE WORLD

Support Your Physical & Mental Wellbeing

Confidential wellbeing support complimentary to your SAS insurance at no additional cost to you or your school.



How to Access

Download the Wellbeing App now at schooladvice.co.uk or via the Apple/Android store. Once downloaded click onto the relevant service you require to access more information.

Download our app from...



Medical Operations Enquiries - 01773 814403
 Cancer & Nurse Support Service - 01773 814404
 Counselling - 01773 814402
 Physiotherapy - 01773 814403
 24 hour GP helpline - 0845 4031037

Pupil Wellbeing Services
 01773 814 095

Pupil Wellbeing Services are also complimentary to your SAS insurance. Contact your policy administrator to enquire accessing support for your pupils.

Trigg House, 11 Maisies Way, South Normanton, Derbyshire, DE55 2DS

Schools Advisory Service is a trading name of Sovereign Risk Management Limited (Registered in England No. 03475198) FCA Registration Number: 309701 | SAS167 V12

Terms and conditions apply. Contact SAS for more details.





HI THERE!

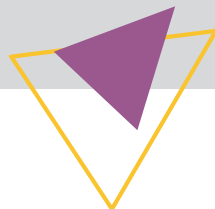
It is a privilege to share with you the first edition of '**Trust Matters**' - our termly opportunity to share some of the exceptional things happening across our schools. Trust Matters is a celebration of the diverse talents and accomplishments that makes Southport Learning Trust a beacon of excellence in education.

Our commitment to providing exceptional education remains unwavering, and it is my privilege to lead a team of dedicated professionals who share a common passion for fostering a dynamic learning environment.

The trust's success is a testament to the collective efforts of our talented educators, supportive parents, and, of course, our eager and curious students.

Together, we will continue to inspire and empower the next generation of leaders, thinkers, and innovators.

Ian Parry
Director of Education



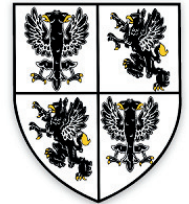
REALISING ASPIRATIONS

We are committed to not only raising aspirations for our young people but ensuring that aspirations are realised. Working in partnership with our communities we will ensure students are visionary thinkers, ambitious innovators and pioneers of the future.

THE FLINT NATIVITY

In December, Stanley packed out its hall with audiences of primary school pupils and the Stanley family as our Year 11's senior production of 'The Flint Street Nativity'

The performance was hilarious and it will also be used for component 3 of the Year 11's performance exam. By performing the full show in front of audiences, the students will boost the confidence going into their exam and it also gives the teacher chance to select the best moments for this purpose.



OUTSTANDING ARTS IN A PRIMARY SCHOOL AWARD



Kew Woods recently won 'Outstanding Arts in a Primary School' at the Educate Awards. This category commends in providing outstanding arts provisions and opportunities.

The award has a focus on maximum pupil participation across all aspects through to final performances and shows throughout the school.



CAMBRIDGE TRIP & RED BULL VISIT



Aspire - Thrive - Succeed

Year 10 and 11 Birkdale students were fortunate to visit the beautiful city of Cambridge whilst exploring what Cambridge University has to offer.



Birkdale had the pleasure of hosting a Senior Aerodynamic Engineer from Red Bull Technology who provided a talk on engineering to high schools in Southport Learning Trust. Students were provided with an insight into a career in engineering and aerodynamics in the military, RAF and Formula One.

QUEENSCOURT HOSPICE



Hayley from Queenscourt Hospice attended Hartley's house assembly to tell Greenbank students about future fundraising events and ways to get involved within school and the local community. They were thrilled to present a cheque for the funds raised from the last academic year!





STEM UNILEVER

Some of Maghull students were invited to attend Unilever Inspire R&D Showcase and took part in interactive workshops including Consumer, Formulation, Processing, Digital & Packaging.



WRIGGLY NATIVITY



Kew Woods Reception's Wiggly Nativity included all children, some even took on speaking parts and solos! Every child got the opportunity to shine on stage and perform for their parents / carers.



MOCK INTERVIEW DAY



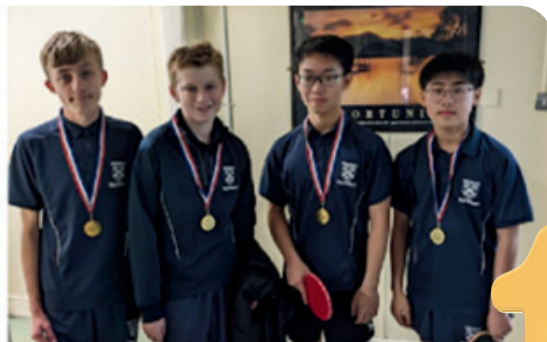
MCHS Year 11 students have been working hard to create their first CV, ready for Mock Interview Day which was held on Friday 15th December. Students participated in mock interviews with interviewers from educational, industry based and professional backgrounds, which helped students to gain valuable experience to give them confidence with future interviews for college, university, apprenticeships and future jobs.



UNDER 16 MERSEYSIDE TABLE TENNIS CHAMPIONS



Aspire - Thrive - Succeed



Birkdale boys were recently crowned Merseyside Under 16 Table Tennis Champions.



YEAR 5 & 6 ATHLETICS SUCCESS



Year 5 and 6 Bedford students recently visited Lings Leadership Academy and took part in a variety of events including, sprints, distance races, long jump & speed balance. Ten schools took part and Bedford Primary took first place, we will now go on to represent Sefton in the County finals in March.

CAREER BUSINESS BREAKFASTS

Mrs Wallis organised the Business Breakfasts for Year 10 students. Businesses and organisations from across the area voluntarily gave up their time to meet with groups of students to provide essential career advice and opportunities.



ACADEMIC EXCELLENCE

We are extremely fortunate to have teams of exceptional practitioners across our Trust ensuring the highest quality of academic experience to our young people. Collaboration is a key value of Southport Learning Trust and it is this connectivity that will maximise the positive impact we have on our communities.

LANGUAGE LEADERS IN FRENCH AND SPANISH

Greenbank French language leaders attended Farnborough Road and Spanish language leaders visited Linaker Primary and delivered a quiz, puzzles, songs and role plays for Year 3 students. The leaders were fabulous ambassadors, they delivered with enthusiasm and a credit to the school.



MCHS SCHOLARS



It's been a busy term for MCHS Scholar students. Since September they have been participating in a variety of different workshops, trips, talks and masterclasses. These include a talk on History of Medicine, a trip to Houses of Parliament, Cambridge University, Art Appreciation Masterclass and An Introduction to Sociology.



SHAPING FUTURES

Shaping Futures have been delivering a Raising Attainment Reading Project with a small group of enthusiastic Year 7 Maghull pupils. The initiative is organised through local universities including the University of Liverpool. On the last session the advocates said goodbye to the students and gifted them with a number of reading books.



SILVER GEOGRAPHY QUALITY MARK



In September Kew Woods were awarded the Primary Geography Quality Mark Silver Award. The quality mark assesses the intent, implementation and impact of their curriculum. It also assesses how geography education shapes behaviour, attitudes and values in school and supports pupils' personal development.



CODING SKILLS SUCCESS



Birkdale Robotics team impressed with their coding skills to win the regional Robotics Competition in Liverpool in December - what a fantastic achievement!





FARADAY CHALLENGE WIN

Six keen Year 8 Stanley scientists competed in a Faraday challenge day recently, hosted at North Liverpool Academy. During the day, the team competed against other schools to complete a STEM challenge. The students worked really well as a team and won the challenge! We are so proud of their efforts and may even be invited to a national final! Well done to the team!



LFC WINNERS

Congratulations to MCHS LFC winners who have been taking part in a 10 week community project. They chose the theme 'Ending Age Apartheid' after researching how isolated elderly people can be. As part of the project they visited care homes and interviewed the residents.



LATIN EXCELLENCE TRIP

Students in Year 9 have had the opportunity to study Latin as part of their extra-curricular offer. As part of their study, students enjoyed a trip to Bath where they took part in a workshop looking at Roman artefacts.



Students then went on a guided tour of the hot springs, changing rooms and temples before drinking some of the actual spring's water. Students had time to explore the city centre, visit the gift shop and even a quick game of mini golf!



STUDENTS READ THE ARRIVAL BY SHAUN TAN

Year 6 Bedford students have been reading The Arrival by Shaun Tan - Origami birds are an important part of the story and a way main characters communicate with each other. The children wrote letters in role as the father writing to his daughter. They then fold their letters into a dove - just like the story.



LITERACY LEADERS TRIP TO HAWORTH

Greenbank Year 9 literacy leaders enjoyed a fantastic day at Haworth, learning all about the Bronte sisters, and enjoying Moorland walks and workshops.



INVESTING IN OUR PEOPLE

*High quality Professional Development for all colleagues across our Trust will lead to the biggest single **sustainable** impact on the progress of our young people.*



Aspire - Thrive - Succeed

LEADING LITERACY

Birkdale have been delighted to see the impact of Amy Higgins' NPQ in Leading Literacy across the school. Following the recommendation from Kew Woods, they have phonics charts in all classrooms now to accompany our reciprocal reading posters. All students in Years 7 and 8 have also been reading in every subject from their anthologies of carefully chosen texts to develop reading skills in conjunction with hinterland knowledge for our curriculum.

STUDENT ELECTIONS

MCHS has launched its student leadership elections for the year 2024-2025. The students will be starting their elections campaigns through February and March then electing for their student leadership team at the end of March. Throughout the school, our students will be following our country's election model and voting for our student leaders via election booths at our polling station within school.



A LEVEL ARTS TRIP TO LONDON

Maghull A Level Art students enjoyed a trip to London as part of their course. During their trip, students visited the National Gallery, Mall Galleries, Twist Museum, Outernet, The British Museum and Liberty.



INTERNATIONAL CHILDRENS DAY

To mark International Children's Day Greenbank hosted a 'Student Takeover' week, whereby pupils from Year 7 and 11 'took over' the week's assemblies. The Year 7 pupils assembly highlighted the importance of celebrating children across the world.



Year 11 ended the week delivering an assembly on their own Greenbank journey. The pupils talked through moments where they had to be resilient as well as moments where they felt proud. A Year 9 student delivered a thoughtful and hard hitting assembly about the dangers of teenagers spending too much time on mobile phones.

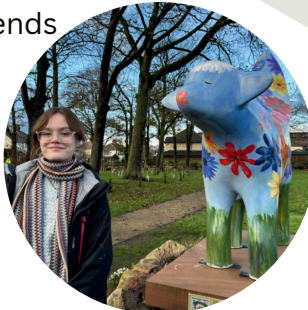




SUPER LAMBANANA

A super lambanana was unveiled in Bobby's Wood, Maghull recently. The Superlambanana was sold to Friends

of Maghull and District and was refurbished locally before our Sixth Form student, Amy Burns enhanced it with her creative art work. Staff from school, as well as local councillors and members of the community were in attendance at its unveiling which now stands at the South Corner of Bobby's Wood.



HUMAN BOOK CHAIN

Hundreds of people in the local community in Bootle, including staff and students from Bedford formed a human chain to move 15,000 books from Kingleys and Co, a Victorian explorer themed children's bookshop in The Strand, to its new location on Stanley Road, Bootle.

CAREERS IMPACT REVIEW

In December, MCHS proudly participated in the Careers Impact National System Review in collaboration with the Careers and Enterprise Company. The report identified our vision of 'Brokering Aspirations' as central to the school ethos. Staff are empowered to deliver innovative career-related learning, with leadership dispersed throughout. Strategic networking and community engagement create exciting opportunities with employers, enriching student prospects. The investment in our school careers team has also ensured programme stability and a dedication to the inclusive ethos, supporting vulnerable students to realise their aspirations.



WHOLE SCHOOL EMBEDDING FORMATIVE ASSESSMENT PROGRAMME WITH SSAT AND EEF

The aim of the EFA programme is to improve pupil outcomes by embedding the use of formative assessment strategies across Stanley. The successful application has generated a real buzz around high-quality teaching and learning. Several teachers are now in place as TLC leaders, responsible for running monthly TLC workshops. This will be an excellent opportunity to support fellow colleagues as they broaden their pedagogical toolkit.



RAISING MENTAL HEALTH AWARENESS

Every year, Kew Woods celebrates Mental Health Day, giving pupils and staff strategies to support their wellbeing. Kew Woods invest in children through drama workshops by inviting Altru Drama to perform assemblies.

A range of assemblies are booked throughout the year that help children understand about bullying, online safety and mental health awareness. These help children to navigate their feelings and how to deal with situations.



WELLBEING CHAMPION APPRENTICESHIP

Birkdale have been very fortunate to reap the benefits from Sophie Hunter's Wellbeing Champion Apprenticeship qualification. With the knowledge gained from the apprenticeship, Sophie has been able to organise staff wellbeing meetings and make wellbeing resources more readily available to staff.

They now have a newly updated staff wellbeing board in the staff room, improved facilities in the female toilets and the reintroduction of wellbeing events such as 'Toast Tuesdays'.



INCLUSIVE EDUCATION

We will remove barriers for all of our young people ensuring equity and embedding ambition for all.

EVERTON IN THE COMMUNITY

Greenbank pupils from Year 8 and 9 took part in a practical workshop delivered by staff from at Everton in the Community. 'Help out a mate' focused on recognising signs of anxiety, how to cope and how to get support. Also, the importance of physical and mental wellness.



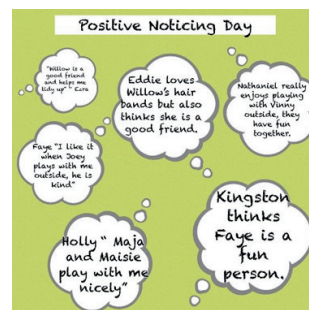
CHRISTMAS ADVENT LITERACY

Congratulations to MCHS advent winners, who were selected by teachers as promising readers everyday throughout December. Each winner was awarded with a £10 book token and a visit to Broadhurst Book Shop in Southport, where they had a hot chocolate and chatted about the books they bought.



CELEBRATING INCLUSIVITY

We celebrate individuality and promote inclusivity for autism awareness, anti-bullying and world down syndrome day. During Positive Noticing Day all children wrote something positive about another person and every child went home wearing a badge.



DUKE OF EDINBURGH SILVER SUCCESS

Congratulations to all the Birkdale boys who gained their Silver DofE awards. They are delighted to have a further sixty boys, fully representative of our diverse cohort, start their journey in January too.



Aspire - Thrive - Succeed



LIVERPOOL FC COACHING

20 students from Y9 ,10 & 11 were invited by former student, Ted Smith, to LFC Academy. The boys were coached by Adrian, Diogo Jota & Joel Matip as part of their UEFA B License preparation. All boys enjoyed the opportunity and were a credit to the school.





SEND COFFEE MORNINGS

Each term Stanley hold a coffee morning for parents and carers and reach out to our feeder Primary Schools. As their students look to going on to High School it has become an invaluable way to build up relationships as well as being able to get the professional advice and information from Together Trust.



Each event has a different topic for discussion with a professional from the Together Trust organisation. It is always a well-attended event and parent/carers always comment on the benefits of having the opportunity to speak with and listen to a professional in a warm and relaxed atmosphere.

The Greenbank Way

INSPIRE	CARE	ACHIEVE
Have a positive attitude to learning.	Respect yourself, others, your work, and the school environment.	Attend school every day and be punctual.
Participate in lessons and in wider school life.	Have impeccable manners and show kindness and empathy.	Be well-organised for your day and have all equipment.
Be a resilient, inquisitive, and curious learner.	Have pride in yourself, your school, and your work.	Respond to feedback from your teachers to further your success.

THE GREENBANK WAY

Over the Autumn term, students continued learning 'The Greenbank Way' Behaviour Curriculum, which focused on respect for ourselves, others and the school environment. Students also focused on the importance of empathy and kindness.



"Somewhere along the way, we must learn that there is nothing greater than to do something for others."
Martin Luther King Jr



Aspire - Thrive - Succeed

AUTISM INITIATIVES

Work has been ongoing with Autism Initiatives to support with Birkdale House charity fundraising events. House Turing representatives met with A Great Little Place at the Atkinson to outline how they can support their work.



HICKORY'S TRIP

What a great experience for MCHS Year 11 at Hickory's! Students recently went on a visit and were given the exciting opportunity to work in the kitchens to develop their skills in food preparation. Students rubbed meats and made bulk batches along with creating a range of sauces and developed their awareness of how to make meals on a large scale.



EYFS STARS SHINE BRIGHT

Families and friends of the brilliant early years children were welcomed into Bedford to share the festive fun and join in the singing of Christmas tunes. 'Our children have been practising so hard for this performance and all their time and effort was so worth it because they were absolutely amazing on the day,' says Mrs Fleming, Reception teacher.



Southport
Learning
Trust



EMPOWERING COMMUNITIES TO
POSITIVELY IMPACT THE WORLD

Southport Learning Trust
Morningson Road
Southport, PR9 0TT
01704 339870